
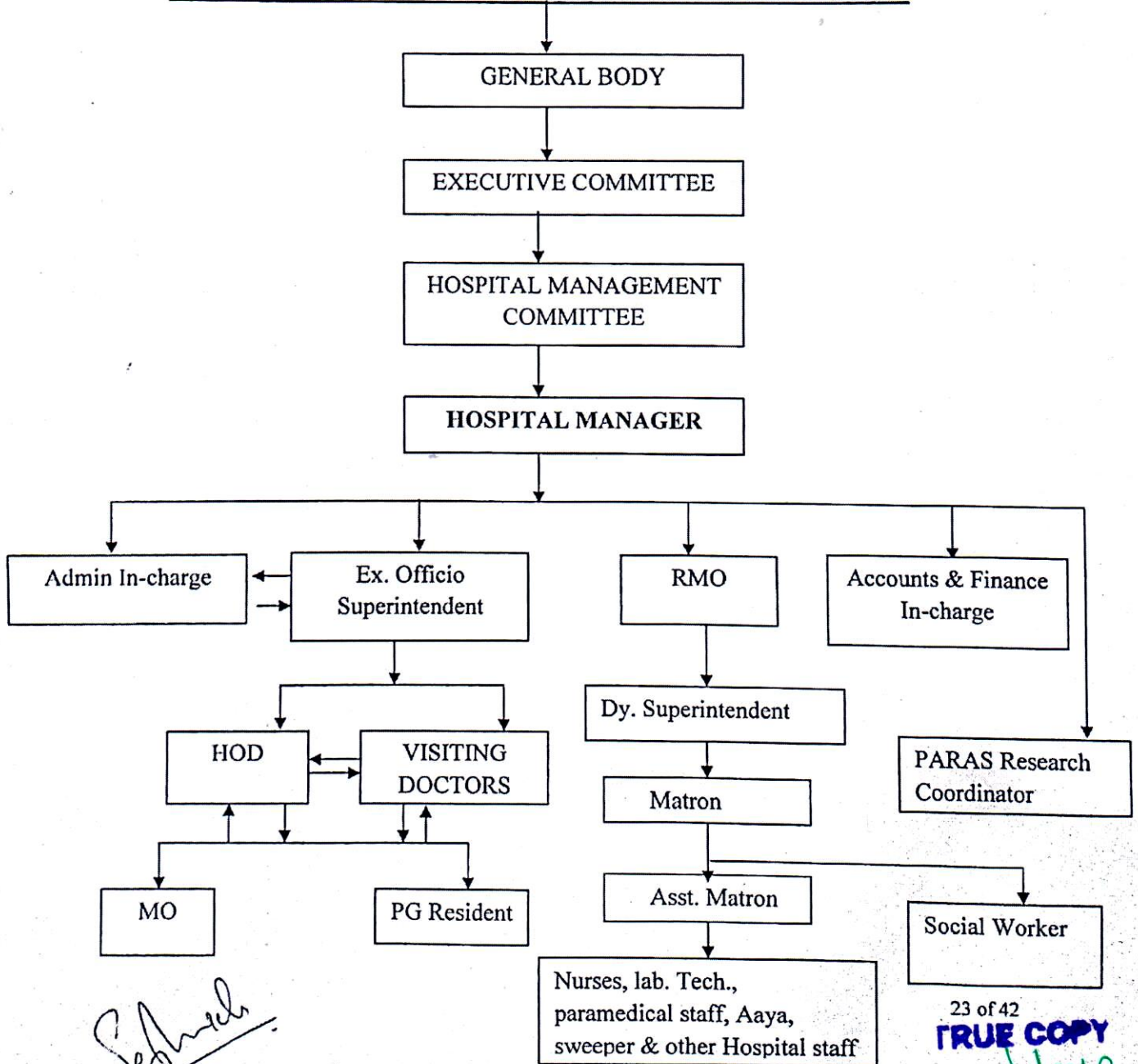


SANE GURUJI AROGYA KENDRA, HADAPSAR, PUNE		
APEX MANUAL		
	DOC. NO.	SGAK/AM/01
	REV. NO.	01
	Issue Date:	01.10.2017
Reference: NABH standard for Ayurveda hospitals (2 nd edition)		

ORGANOGRAM

ORGANIZATION CHART FOR SANE GURUJI AROGYA KENDRA



Seshu
Dr. Sushilkumar Deshmukh
 Hospital Administrator & NABH Co-ordinator
 SGM's Sane Guruji Arogya Kendra,
 Hadapsar, Pune-411028.

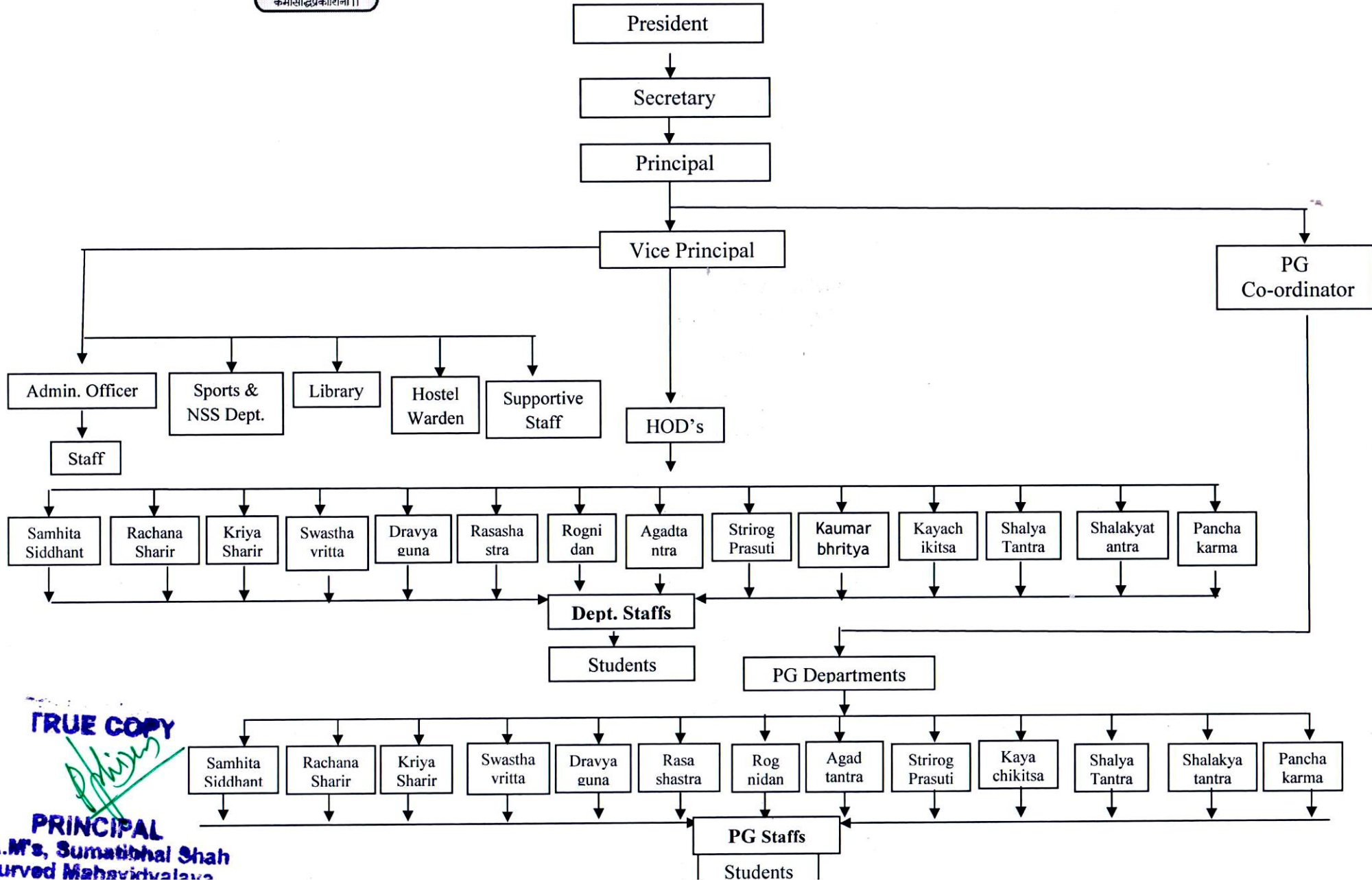
23 of 42
TRUE COPY

Prakash
PRINCIPAL
M.A.M's. Sumabhai Sh
Ayurved Mahavidyalay
 Hadapsar, Pune-411028.
 Scanned by CamScanner



॥अभ्यासात् प्राप्यते दृष्टिः
कर्मसिद्धिप्रकाशिनी॥

Maharashtra Arogya Mandal's
SUMATIBHAI SHAH AYURVED MAHAVIDYALAYA,
Malwadi, Hadapsar, Pune - 411 028.



TRUE COPY

[Handwritten signature]

PRINCIPAL

A.M.'s, Sumatibhai Shah
Ayurved Mahavidyalaya