

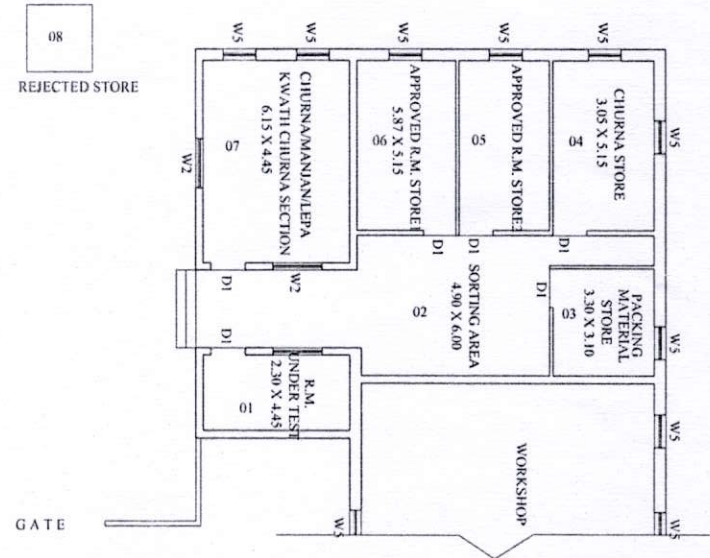
PLAN OF M.A.M.'S AYURVED PHARMACY (A-WING)

M.A.M.'S AYURVED PHARMACY A-WING			
S.NO	SECTIONS	AREA IN SQ.M	AREA IN SQ.FT.
01	CHANGING ROOM (MALE)	08.82	94.93
02	CHANGING ROOM (FEMALE)	10.94	117.75
03	OFFICE	15.98	172.00
04	OFFICE	10.58	113.88
05	Q.C. SECTION	15.26	164.25
06	FINISHED GOODS STORE	33.97	365.65
07	QUARANTINE/ INPROCESS	15.60	167.91
08	PANAK/SYRUP/KWATH	18.65	200.75
09	GUTIKA/ VATI SECTION	18.65	200.75
10	SNEHA KALPANA-TAILA/GHRITA	18.65	200.75
11	ASAVA/ARISHTA SECTION	25.46	274.05
12	BHASMA/KUPI PAKVA SECTION	23.63+18.36	
13	SATTVA SECTION (BHATTI SECTION)	41.99	451.98
14	ARK SECTION	10.44	112.37
15	WASHING AREA	21.96	236.37
16	AVALEHA/PAK/KHAND SECTION	14.23	153.17
17	MALAM/OINTMENT SECTION	11.31	121.74
18	CAPSULE SECTION	13.65	146.92
19	TABLET SECTION	13.65	146.92
20	LABELLING & PACKING SECTION	23.01	247.67

M.A.M.'S AYURVED PHARMACY A-WING
BUILT UP AREA = 461.51 SQ.M (4967.70 SQ.FT)



TRUE COPY
Sumatibhai Shah
PRINCIPAL
M.A. M's, Sumatibhai Shah
Ayurved Mahavidyalaya,
Hadapsar, Pune-411028



PLAN OF M.A.M.'S AYURVED PHARMACY (B-WING)

M.A.M.'S AYURVED PHARMACY B-WING			
S.NO	SECTIONS	AREA IN SQ.M	AREA IN SQ.FT.
01	RAW MATERIAL - UNDER TEST,	10.23	110.11
02	SORTING AREA	29.40	316.46
03	PACKING MATERIAL STORE	10.23	110.11
04	CHURNA STORE	15.70	168.99
05	APPROVED R.M. STORE 1 & 2	30.23	325.39
07	CHURNA/MANJAN/LEPA SECTION	27.36	294.50
08	RAW MATERIAL - REJECTED	04.00	43.05

M.A.M.'S AYURVED PHARMACY B-WING
BUILT UP AREA = 154.55 SQ.M (1663.57 SQ.FT)

North :		PROJECT - MAHARASHTRA AROGYA MANDAL'S AYURVED PHARMACY IN PLOT NO.150 TO 158, & PLOT NO 159 TO 173, 190 TO 194. HADAPSAR, DIST. PUNE-411028
		DILIP G. KALE ARCHITECT & INTERIOR DESIGNER 1226 'B', SHUKRAWAR PETH, PUNE 02
ARCHITECT'S SIGNATURE		DATE
FOR - MAHARASHTRA AROGYA MANDAL	JOB NO.	SCALE
		REVISION